

COMMERCIAL

LOG STRUCTURES

BUILDING MEMORIES

ONE LOG AT A TIME

BUILD

THE CABIN EXPERIENCE

Everlast Log™

P.7
→

HIGHLIGHTS

- ✓ Resort Cabin Owners P.8
- ✓ ADA Cabins P.22
- ✓ Bathhouses P.27
- ✓ Bunkhouses P.32

Conestoga
LOG CABINS & HOMES

ConestogaLogCabins.com

Why Conestoga?



Camping's #1 Cabin Supplier:

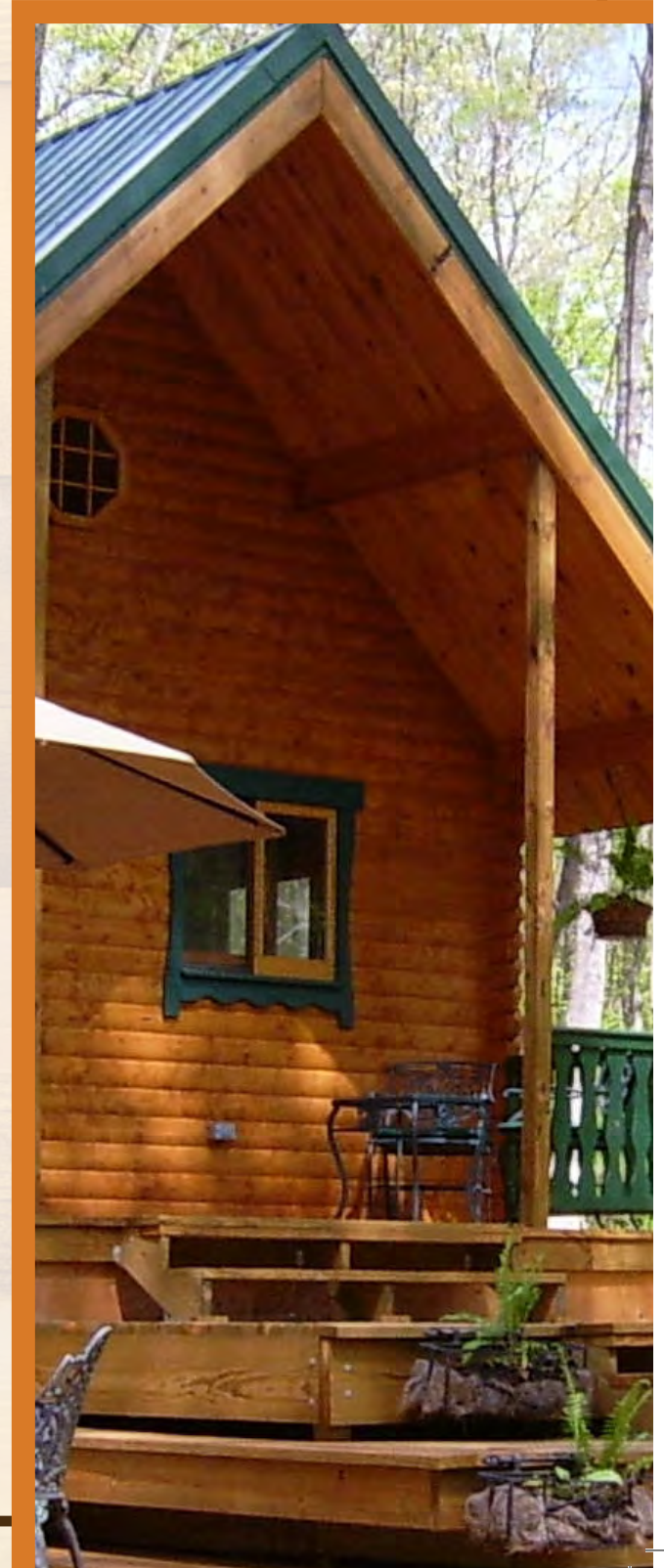
For more than a decade Conestoga Log Cabins has served the needs of the US campground and resort industries. As the largest American supplier to these industries, we have earned the trust and respect of campground owners and resort property managers nationwide as well as overseas. Call us to review cabin plans and see how we help campgrounds and resorts succeed. We are happy to provide references.

#1 Supplier of Rental Cabins:

Conestoga built a reputation for designing and manufacturing attractive, economical, long-lasting rental cabins. Conestoga is the #1 supplier of commercial log cabins with thousands sold to campgrounds, resorts, time-shares and other commercial lodging properties. A successful rental program requires log cabins that are not only beautiful and rugged but affordable and low-maintenance. Trust Conestoga to deliver log cabins that will contribute toward a healthy rental ROI year after year.



Images of products are for illustrative purposes only.



What Sets Us Apart: The Conestoga Difference

Real People and a Resourceful Website:

When Conestoga first started, we began producing log cabins as a small family business. Since then we've experienced tremendous growth but we have stayed true to our family roots. Conestoga Log Cabins is still run like a family business. Local people answer the phones, run the machinery and ship your log cabin kits. Our commitment to tradition and the people in our Conestoga family doesn't mean we don't embrace technology though. One look at our website (ConestogaLogCabins.com) will show you that we take full advantage of all the web offers. We have rich media content with multiple video streams, interactive cabin design capability, plenty of PDF downloads and enough pictures to keep our web host's servers very busy. Work with us and you'll see: through our people and our virtual presence, we really connect with the log cabin community.

Literally, Ready-To-Assemble:

Every log cabin kit we produce is built to exact specifications and precision-milled in our 100,000 sq. ft. Pennsylvania production facility. Every log cabin kit arrives at your building site completely ready-to-assemble. Our cabin kit comes with logs cut to exact size, precisely notched and individually coded and labeled. As the leading US producer of log cabin kits, Conestoga employs an array of CAD/CAM technology to ensure that every cabin kit can be assembled with ease. Not only are our kits easy to assemble, Conestoga's log cabins are also the most inclusive standard kits available. See the complete material listing in this catalog.



Images of products are for illustrative purposes only.

Always Available: Conestoga Support

Conestoga Project Consultants - Trusted Advisors: Nearly everyone enters the world of log cabins as a novice. For most people, there is a time of orientation as they refine their log cabin dream. There is a process of education as they learn about log cabins, designs, building materials and even learn what questions to ask. We pair every new customer with an individual Conestoga project consultant who has only one job: to serve as a trusted advisor. Conestoga project consultants will help every step of the way.

Conestoga Technical Support: Because we design and manufacture every log cabin kit we ship, Conestoga has developed a comprehensive knowledge base of technical expertise. Not only do our technical support staff work closely with design, engineering, and production, they also interact with assembly teams, builders, project consultants, and the end users of our product. This comprehensive knowledge of our product line makes them world-class support specialists. Conestoga's technical support specialists are available to ensure a trouble-free and satisfying experience with your Conestoga kit. Our staff of support specialists is field-trained, service oriented and committed to perpetuating our reputation for outstanding customer support. Call them and see for yourself!



Images of products are for illustrative purposes only.

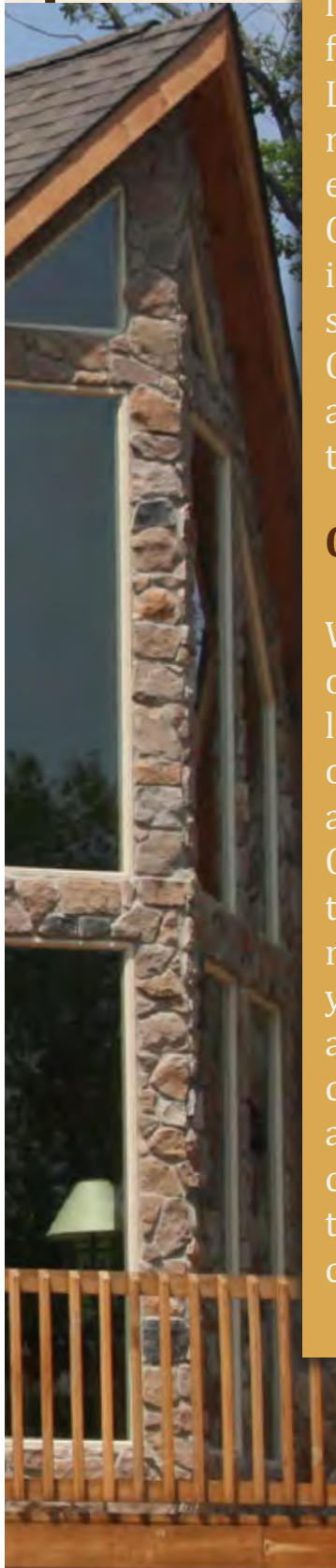
Always Available: Conestoga Expertise

Conestoga's Custom Design Services:

While we offer an extensive line of standard models across a wide range of log building types, there may be unique requirements to a site or special features needed in a log building which demand a custom design. Conestoga Log Cabins offers an in-house custom design service to accommodate such needs. Our designers are experts in log cabin structures and bring years of experience in design, engineering and use of CAD (computer aided design). Conestoga's design department has advanced the use of BIM (building information modeling) for log cabin production and works closely with software developers to ensure that Conestoga stays on the leading edge of CAD technologies. Whether you need a simple adjustment to a floor plan, a reconfiguration of an existing building plan or conceptual sketches for a totally new design, Conestoga's custom design service is able and available.

Conestoga Cabin Assembly Service:

While many Conestoga log cabin kit buyers handle their own assembly, others chose to contract with a local builder. Choosing to build a Conestoga log cabin also provides you with the option to contract with us for assembly of your log cabin kits. Conestoga employs a network of professional assembly teams each of which is trained, experienced and endorsed by Conestoga Log Cabins. Our assembly teams arrive on site and complete the entire kit assembly process, ensuring you of a finished product built right and built to last. If your preference is to have someone assemble your cabin kits for you, there is no better team available than a Conestoga assembly team. Conestoga assemblers have successfully completed many campground and resort property log cabin kit installations. Campground and resort references are available upon request. Certain terms and conditions apply to cabin kit assembly services. Contact Conestoga to request Assembly Terms and Conditions or to speak with a project consultant.



Images of products are for illustrative purposes only.

Better Materials, Better Cabins

Conestoga's Everlast™ Log:

Every Conestoga log cabin is built using Conestoga's exclusive Everlast™ Log - the DNA of every Conestoga log structure. The Everlast™ Log is a double-laminated powerhouse of structural strength, stability and durability. Each log is kiln dried to an amazing 15% or less moisture content. Because of the physical properties of the log's construction, the Everlast™ Log resists warping, twisting, and settling which means every log delivers consistency in performance and structural stability. Each Everlast™ Log is precision-notched for exact fit and the extraordinary interlocked corners add structural integrity and weather-tight performance to all Conestoga buildings. Our logs are used in unbroken lengths up to 28' so there are never butt joints in a Conestoga log cabin wall. Joint-less log walls also deliver superior weather and water resistance. Finally, the lumber species used in our Everlast™ Logs is renowned for excellent working properties including cutting, nailing, sanding, staining, and finishing.



We've Always Been Green:

Often people interested in log cabins are also drawn to environmental wellness. Likewise, Conestoga is committed to environmental wellness and we demonstrate this commitment in our manufacturing methods. It begins with Conestoga's Everlast™ Log which is produced in concert with an Environmental Management System certified ISO-14001 assuring minimal environmental impact in timber harvesting. Our milling operations utilize cutting-edge fiber optimization software which nearly eliminates any material waste.



Images of products are for illustrative purposes only.

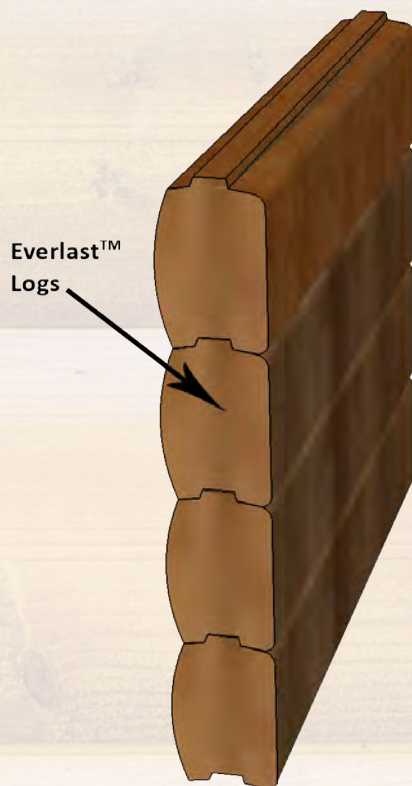
We Can Meet Any Energy Code

Our log cabins and homes have never failed to meet an energy code requirement. Logs benefit from thermal mass to capture and retain heat better than traditional homes. We have an advantage over other log cabin and home companies because our Everlast™ Log is engineered to allow for longer lengths, fewer twists, checks and considerably less gapping than traditional log structures. The result is less air infiltration and maintenance that provides a more comfortable energy efficient cabin that saves you money while enjoying your log cabin.

What is Thermal Mass? Thermal Mass is a concept in building design and construction that describes how the walls of the building provide “inertia” against temperature fluctuations. By their very nature log cabins and log homes differ from other construction techniques, because solid wood has both moderate R-value (insulation) and significant thermal mass.

Solid Wall

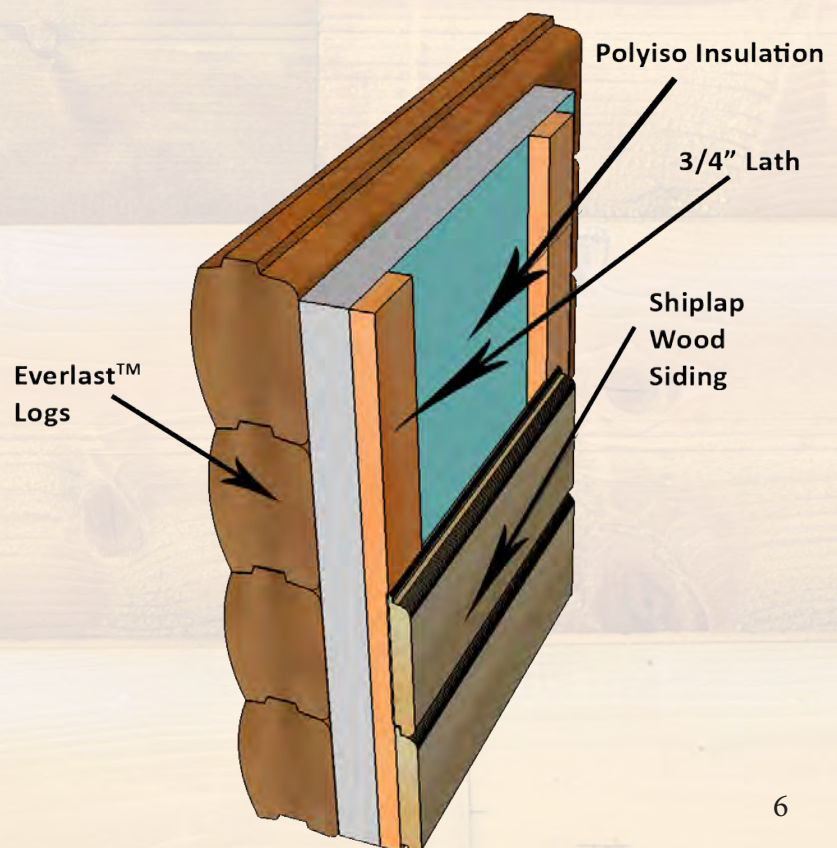
The single wall is perfectly suited for cabins that are located in moderate climates and/or are used seasonally.



Solid Wall Siding Package

This is recommended for year round residences in cold weather climates. This package adds a layer of insulation and interior log siding to a single wall structure. This technology will meet or exceed the most stringent energy code requirements and lower utility bills, while maintaining the same log look inside your cabin.

R-16 to R-26 Based On Thickness of Insulation



Conestoga's Everlast™ Log

Offers a low maintenance solution

- The Everlast™ Log is resistant to warping, twisting and settling because it is engineered to be structurally stable.
- The Everlast™ Log is resistant to movement, shrinkage, and checking, because it is kiln-dried to 15% or below moisture content.
- The Everlast™ Log is resistant to decay, because it is kiln-dried below the 19% fungi threshold.
- The Everlast™ Log is notched, cut to length, drilled, and mortised for all electric and fasteners.
- The Everlast™ Log can be up to 28' long, which eliminates unsightly log joints, reduces the possibility of air and water infiltration and improves overall energy efficiency.
- The Everlast™ log is 50% stronger than traditional logs.

The Stronger and More Stable Engineered Log



D-Log

This cross-section of glued surfaces is what gives the Everlast log its superior strength.

The two to three interior pieces are laminated together with a continuous height outside piece on each side.

D-Log has a round face on the exterior and a flat face on the interior.

Continuous height outside pieces.

H-Log

Everlast Log Advantages

- The Everlast log's wood is harvested using sustainable forestry techniques.
- It is lighter, making it easier to handle during installation.
- It possesses very tight growth rings and offers preferred stability characteristics when exposed to moisture fluctuations.
- It can be stained with consistent and excellent results.
- It is very workable when cutting and drilling.
- It has excellent nailing characteristics.

Flat Log has a flat face on the exterior and interior faces.

Conestoga Log Cabin Resort Owners

"We have had a wonderful experience and great public use of the camper cabins at Carolina Beach State Park and believe some of our fellow state park managers would be interested in Conestoga Cabins."

Carolina Beach State Park, NC

"My family's summer camp for children dates back to the early 1930's. When it came time to renovate and build our future we turned to Conestoga Log Cabins and we couldn't be happier! I could go on and on about the quality of the materials, detailed thinking that goes into each building and the superior customer service. You don't need to look anywhere else for log cabin kits. These cabins are everything you could dream of. Conestoga's log cabin kits are the gold standard in the industry. We did our homework and checked out several manufacturers. Whether it's a hot, hot summer day or a cool fall evening, the cabins are tight and very comfortable. Their log cabin kits are built to last. Quality at every step of the relationship with Conestoga. Highly recommend."

Camp Emerson, MA

Visit our website for more testimonials!

The Most Complete LOG CABIN Package in the Industry

Floor System:

- 4" x 6" Pressure Treated Skids
- Metal Floor Trim
- Fasteners
- 2" x 6" Tongue & Groove Flooring

Log Walls:

- Laminated Everlast™ Kiln-Dried Log Wall System
- Gable End Logs
- Caulking
- Emseal Gasket Material
- 80d/40d Nails

Windows:

- Double Hung Low-E
- Egress Windows - Casement Low-E
- Window Bucks
- Interior & Exterior Window Trim

Doors:

- Insulated Steel 9-lite 2 Panel Exterior
- Pre-Hung 6 Panel Wood Interior Doors
- Door Bucks
- All Door Hardware
- Interior & Exterior Door Trim Fasteners

Loft Floor System:

- Laminated Floor Joists
- Joist Hangers
- 2" x 6" Tongue & Groove #1 Yellow Pine Loft Floor Boards
- Pre-manufactured Staircase & Railings or Loft Ladder (cabin size specific)
- Loft Railings, Posts & Pickets
- Fasteners

Roof System:

- Laminated Ridge Beam
- Laminated Mid-Roof Beams
- 15 lb. Felt Paper
- Gable End Trim
- 45 yr. Metal Roof
- 2" x 6" Tongue & Groove Yellow Pine V-Groove Roof Boards

Interior Finish Materials:

- 2"x 4" Interior Partition Walls
- 2"x 6" Interior Partition Walls (Plumbing Walls)
- 1"x 6" Shiplap Interior Wall Boards
- Interior Baseboard Trim
- Interior Door Trim
- Pre-Hung Interior Wood Doors
- Passage Door Hardware
- Private Door Hardware
- Fasteners

Porch Materials:

- Pressure Treated Floor Joists
- Joist Hangers
- 2" x 6" Pressure Treated Decking
- Porch Posts, Railings & Pickets
- Porch Roof Beams
- All Roofing Materials & Trims
- 4" x 6" Pressure Treated Skids
- Gable End Webbing

Electrical:

- Electrical Wiring & Grommets
- Boxes, Switches, Outlets & Covers
- Interior Light Fixtures & Bulbs
- Smoke Detectors
- Exterior Lights & Bulbs

Pre-Cut Materials:

- Pre-cut/Pre-drilled Logs
- Pre-cut Floor Boards
- Pre-cut Roof Beams & Peak Logs
- Pre-cut Interior & Exterior Window/Door Trims

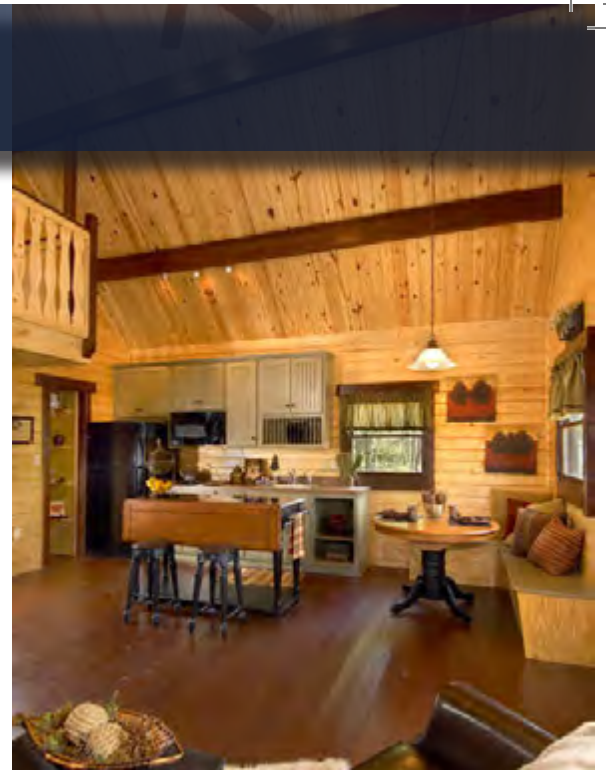
Options:

- Decks
- Porch Extensions & Side Porches
- Custom Doors & Windows
- Log Wall Insulation Packages
- Floor & Ceiling Insulation
- Interior Polyurethane
- Exterior Stain
- Pier Kit
- Conventional First Floor System
- Supplemental Heating & Cooling Unit
- Kitchenette
- Screen Door Kit
- Cedar Log Furniture

Heavy Roof and Floor Loading, High Altitude, Seismic, Hurricane, Nordic, Tropical and Other Extreme Weather Building Specifications Are Available as an Upgrade.

Cabin size will determine floor and roofing system.

CABINS



SPECIFICATIONS

1080 SQF | 2 BR | 1 BA

KIT OVERVIEW

The Mountain King Commercial Log Cabin Kit is one of Conestoga Log Cabins' best sellers and we're not the least bit surprised. These 20' x 36' log cabin kits are the ultimate in cabin luxury. Your guests will think it is the perfect getaway from the stresses of daily life.

- Living Area
- Loft Space - 12/12 Roof allows ample head clearance
- Kitchen Area
- 6' Covered Porch
- Bathroom
- Bunkroom

MOUNTAIN KING

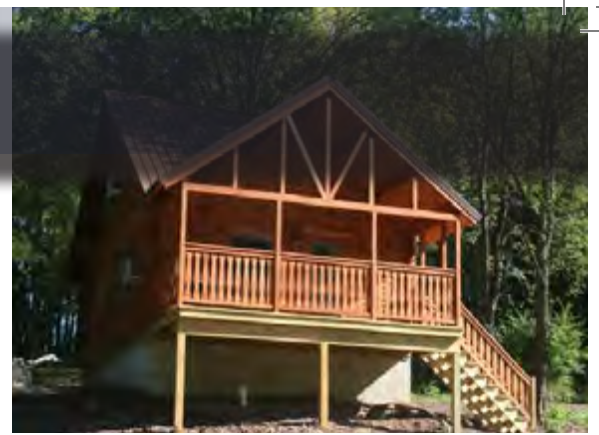
Main Floor

Loft Area

20'

36'





SPECIFICATIONS

740 SQF | 2 BR | 1 BA

KIT OVERVIEW

This 27' x 20' log cabin's bedroom and full bath are coupled with an efficient, open kitchen, roomy great room, and extra loft space making it a choice selection for vacationers everywhere. The Brandywine log cabin package is the perfect addition to your campground or resort property.

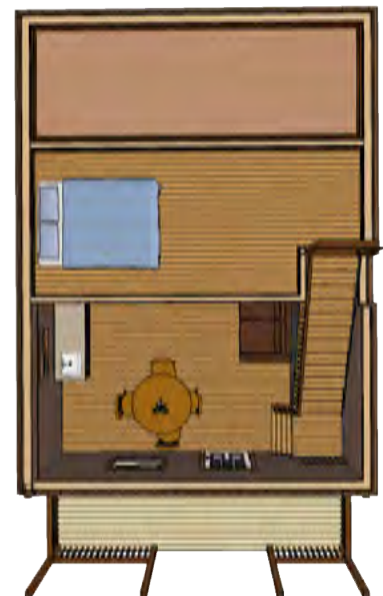
- Great Room
- 6' Covered Porch
- Bedroom with closet
- Bathroom

27'

BRANDYWINE

Main Floor
20'

Loft Area



CABINS



SPECIFICATIONS

727 SQF | 2 BR | 1 BA

KIT OVERVIEW

As the name implies, the Vacationer is the perfect vacation log cabin. These log cabin kits are ideal for the campground and resort owner who wants spacious cabins for families, individuals or couples who like plenty of room. Placed in the right setting, the Vacationer is a guest's dream come true and a resort owner's most profitable investment.

- Living Area
- Covered Porch
- Two Bedrooms
- Private Bathroom
- Loft Area with 12/12 Pitch

VACATIONER

Main Floor

Loft Area

17'

31'





SPECIFICATIONS

667 SQF | 1 BR | 1 BA

KIT OVERVIEW

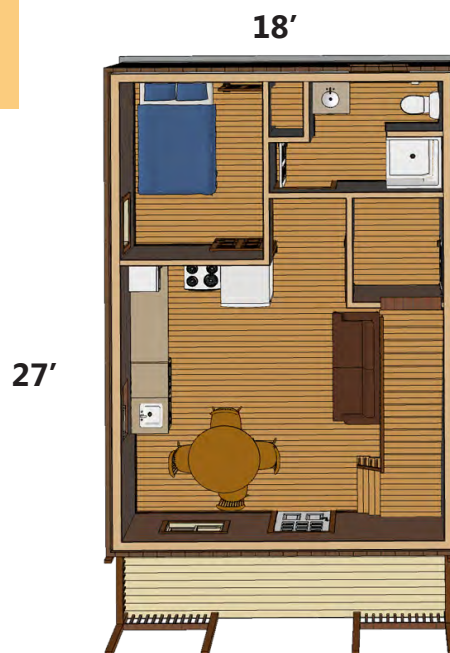
Is your RV campground looking to become more profitable? Is your camping resort ready for upgrades? The Hickory Hill can be the answer to both of these questions. By adding small cabin kits, your business increases options for your guests.

- Great Room
- Loft
- Bedroom
- Private Bathroom
- Covered Porch
- Full size stairs

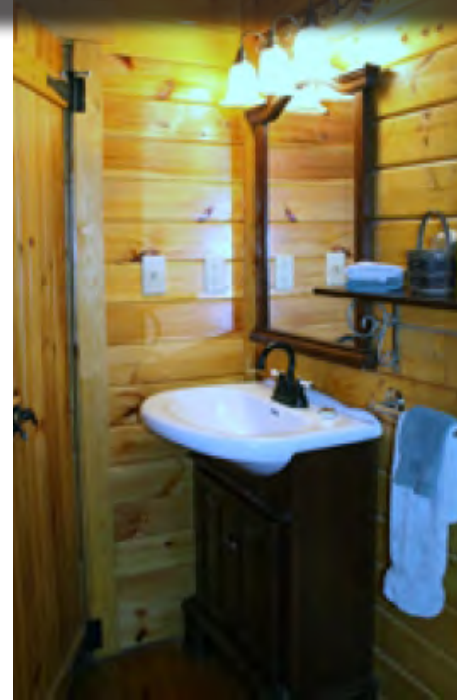
HICKORY HILL

Main Floor

Loft Area



CABINS



SPECIFICATIONS

600 SQF | 2 BR | 1 BA

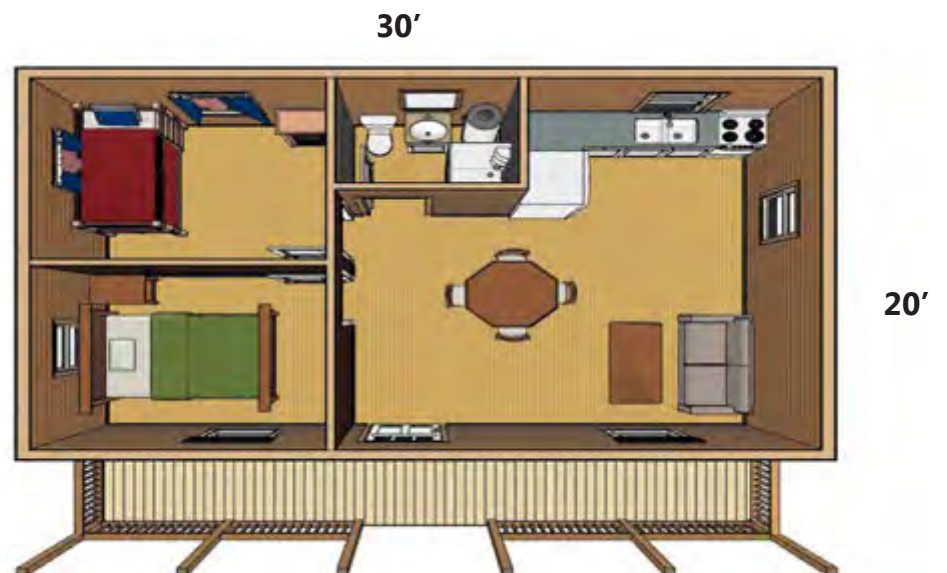
KIT OVERVIEW

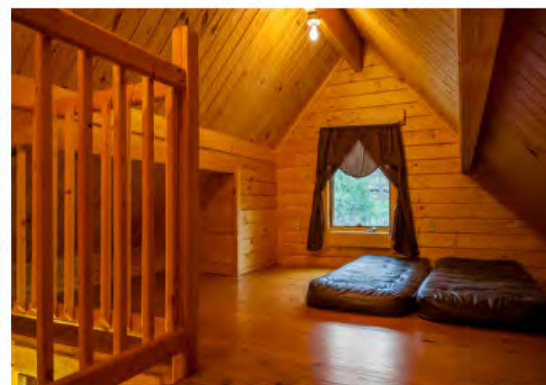
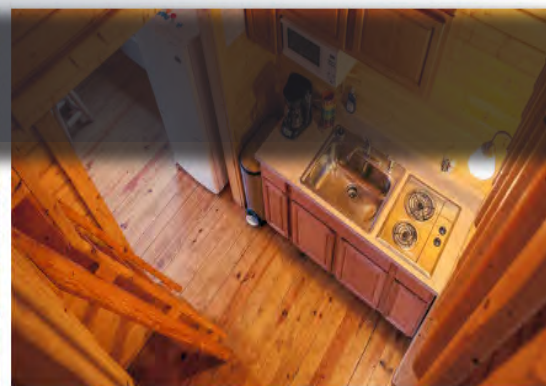
This cabin is a roomy 600 SQF with 2 bedrooms, a bathroom, living area and room for a kitchen. Additional storage is available above the bathroom.

- Living Area
- Storage Space above bathroom
- Kitchen Area
- Covered Porch
- Bathroom
- Bedroom & Bunkroom

TROUT RUN

Main Floor





SPECIFICATIONS

580 SQF | 2 BR | 1 BA

KIT OVERVIEW

Your guests will see our 14'-7" x 27' log cabin package as an idyllic cozy cottage. The Heritage is well suited to be a weekend getaway and vacation spot. This log cabin can be rented by family and friends who want to share the joys of log cabin living together. You'll soon discover that the Heritage will be in high demand throughout your rental season.

- Living Area
- Loft Space - 12/12 Roof allows ample head clearance
- Kitchen Area
- Covered Porch
- Bathroom
- Bunkroom

HERITAGE

Main Floor



CABINS



SPECIFICATIONS

424 SQF | 1 BR | 1 BA

KIT OVERVIEW

The dictionary defines an outdoorsman as a person devoted to outdoor sports and recreational activities, as hiking, hunting, fishing, or camping. If that describes your guests, then the Outdoorsman Log Cabin is made for your campground or resort! It is designed for the outdoorsman who doesn't want to completely rough it and can appreciate modern comforts.

- Living Area
- Loft Space with 12/12 Pitch
- Kitchen Area
- 6' Covered Porch
- Private Bathroom
- Bunkroom

OUTDOORSMAN

Main Floor





SPECIFICATIONS

408 SQF | 1 BR | 1 BA

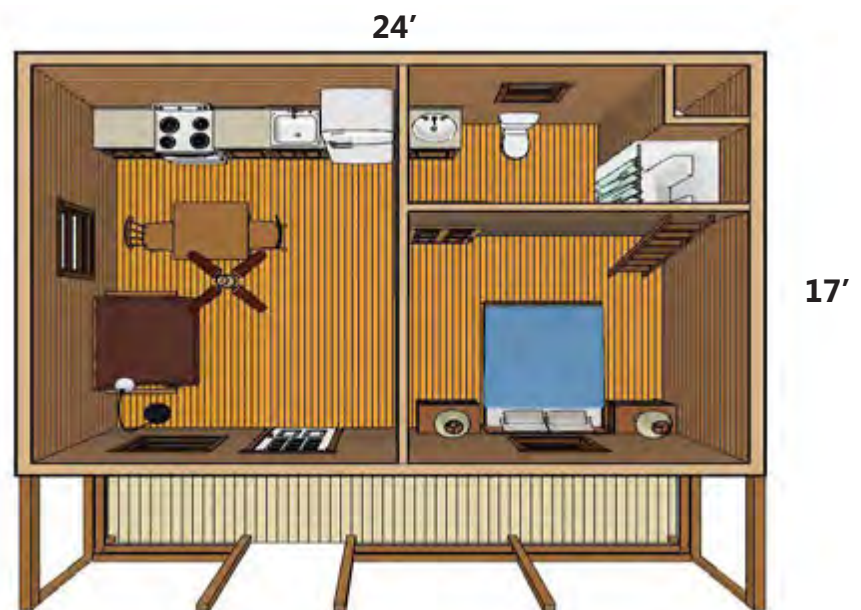
KIT OVERVIEW

The Bear Creek Log Cabin is ideal for family camping vacations. Families will use the Bear Creek as a seasonal getaway spot. Build log cabins on your property and people will love to visit and look forward to returning year after year.

- Living Area
- Storage Loft above Bathroom
- Kitchen Area
- 6' Covered Porch
- Private Bathroom
- Bunkroom

BEAR CREEK

Main Floor



CABINS



SPECIFICATIONS

292 SQF | 1 BR | 1 BA

KIT OVERVIEW

BOULDER LODGE

Two Room

One Room

Commercial small log cabin buyers will find the Boulder Lodge log cabin affordably priced and easy to assemble. You can choose from either a two-room with bath model or one-room model that really opens up the entire interior of the cabin. Campground resort buyers comment on the low maintenance and durable qualities of the Boulder Lodge.

- Living Area w/ Kitchenette
- Covered Porch
- Storage Space
- Private Bathroom
- Bunkroom

14'7"

20'





SPECIFICATIONS

280 SQF | 1 BR | 1 BA

KIT OVERVIEW

You'll quickly see an investment pay off with this sturdy, low maintenance, cost-effective log cabin. Your guests will have plenty of room to relax with the morning paper or a good book on the covered front porch. Considering its size and standard equipment, this log cabin package is a real value.

- Living Area w/ Kitchenette Optional
- Covered Porch
- Bathroom
- Bedroom or Bunkroom

SERENITY

Main Floor

14'

20'



Images of products are for illustrative purposes only.

CABINS



SPECIFICATIONS

232 SQF

KIT OVERVIEW

These two room log cabins are ideal rental units for camping families. the Shenandoah has a separate bedroom for the parents. The Durango offers a bathroom for guests who want private shower facilities.

- Living Area (optional)
- 6' Covered Porch
- Private Bathroom
- Bunkroom

SHENANDOAH/DURANGO

Two Room - Shenandoah
2 BR | - BA

One Room - Durango
1 BR | 1 BA

14'

16'7"





SPECIFICATIONS

195 SQF

KIT OVERVIEW

Cozy, rustic and no-frills, these cabins are perfect for any setting. The Aspen still provides plenty of room to sleep six, while the Getaway includes a private bathroom. Add a microwave and refrigerator to complete the living accommodations.

- Covered Porch
- Private Bathroom (optional)
- Bunkroom

GETAWAY/ASPEN

Getaway
1 BR | 1 BA

Aspen
2 BR | - BA

13'

15'



ADA CABINS



SPECIFICATIONS

169 or 143 SQF

KIT OVERVIEW

The Conestoga and Pioneer are one-room cabins that offer sleeping accommodations for up to four people. Perfect as rental cabins for families or as charming guest accommodations. Sturdy construction and all the features of a true log cabin built into a small, easy-to-manage kit.

- **Covered Porch**
- **Bunkroom**

Additional Materials Included w/ ADA Cabins

- *ADA Strobes*

CONESTOGA/PIONEER

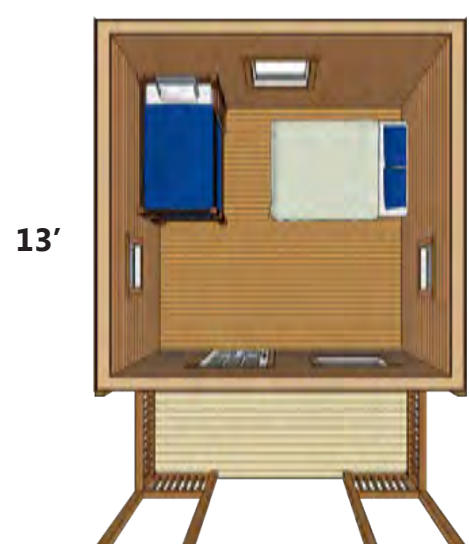
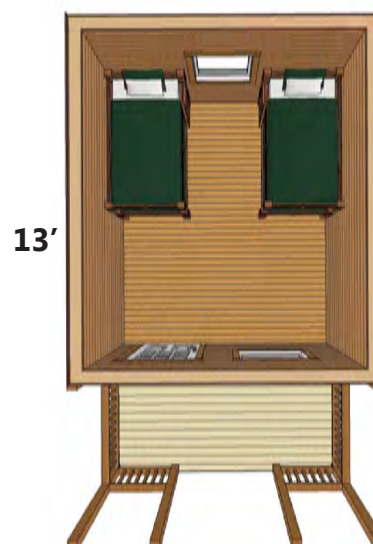


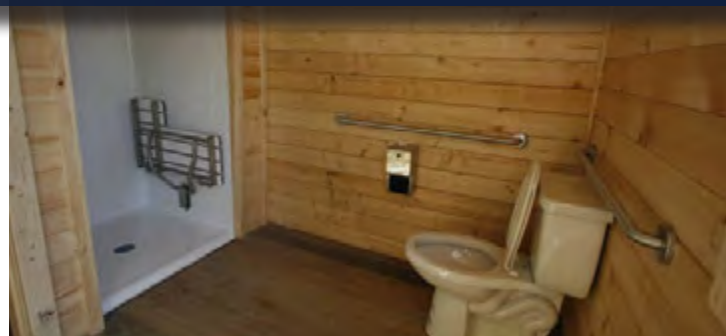
Conestoga
1 BR | - BA

Pioneer
1 BR | - BA

11'

13'





SPECIFICATIONS

394 SQF | 1 BR | 1 BA

KIT OVERVIEW

The Frontier Commercial Log Cabin was designed specifically for a campground that wanted to offer their campers more than just bare bones cabins. They wanted to upgrade to deluxe cabins that would have broader appeal. The Frontier offers the true log cabin experience without forgoing modern conveniences.

- Covered Porch
- Private Bedroom
- Private Bathroom (optional)
- Kitchen Area
- Additional Living Space
- ADA Compliant

FRONTIER



14'7"

27'



Additional Materials Included w/ ADA Cabins

- ADA Strobes

ADA CABINS



SPECIFICATIONS

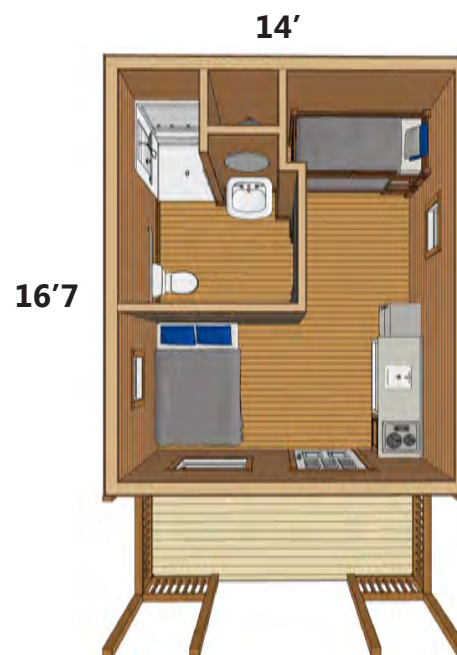
280 SQF | 1BR | 1 BA

KIT OVERVIEW

All of the necessities fit nicely into this small log cabin kit. The Spearfish sleeps 4 comfortably and has a front porch for relaxing after a day of adventure. An excellent choice at an affordable price.

- Covered Porch
- Private Bathroom
- Common Area
- ADA Compliant

SPEARFISH



Additional Materials Included w/ ADA Cabins

- ADA Strobes



SPECIFICATIONS

760 SQF | 2 BR | 1 BA

KIT OVERVIEW

The five room Yukon is sure to meet all of your guests' needs. For extra sleeping space consider adding a futon. The kitchen is roomy enough for appliances and cabinets. Kids will love the smaller bedroom that is perfect for bunk beds. Both bedrooms have closets where guests can store their belongings.

- **Covered Porch**
- **Private Bathroom**
- **Bunkroom**
- **Closet Space**
- **Kitchen Area**
- **ADA Compliant**

YUKON



Additional Materials Included w/ ADA Cabins

- *ADA Strobes*

ADA CABINS



SPECIFICATIONS

669 SQF | 1 BR | 1 BA

KIT OVERVIEW

Guests will return to rent the Hemlock year after year. This spacious cabin offers a private bedroom and bathroom. The family room offers room for a dining table and sofa with a kitchen large enough to make that night's meal.

- Covered Porch
- Private Bathroom
- Bunkroom
- Closet Space
- Kitchen Area
- ADA Compliant

HEMLOCK



18'7"

36'



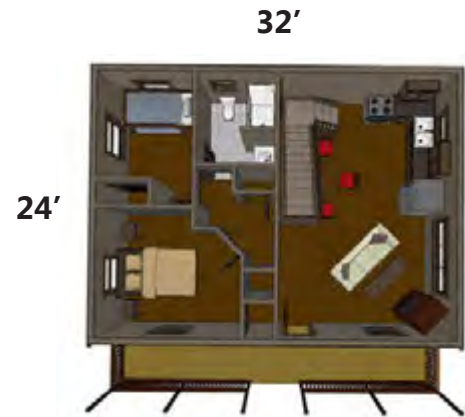
Additional Materials Included w/ ADA Cabins

- ADA Strobes

LARGER CABINS

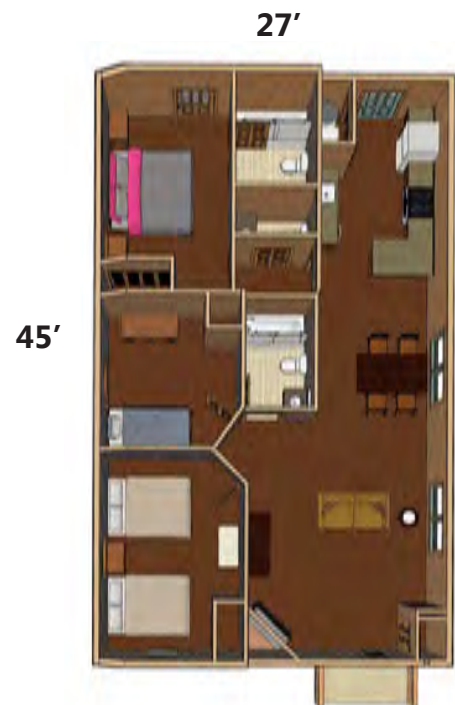
SUSQUEHANNA
1,143 SQF
3 BR | 1 BA

- Great Room
- 3 Bedrooms
- Private Bathroom
- Loft Space
- Kitchen Area
- Covered Front Porch



MEADOWBROOK
1,215 SQF
3 BR | 2.5 BA

- Suite with private bathroom
- 2 additional bedrooms
- Open Floor Plan
- Full Kitchen
- Additonal 1/2 Bath



BATHHOUSES



Modified Durango Bathhouse Pictured



SPECIFICATIONS

232 SQF

KIT OVERVIEW

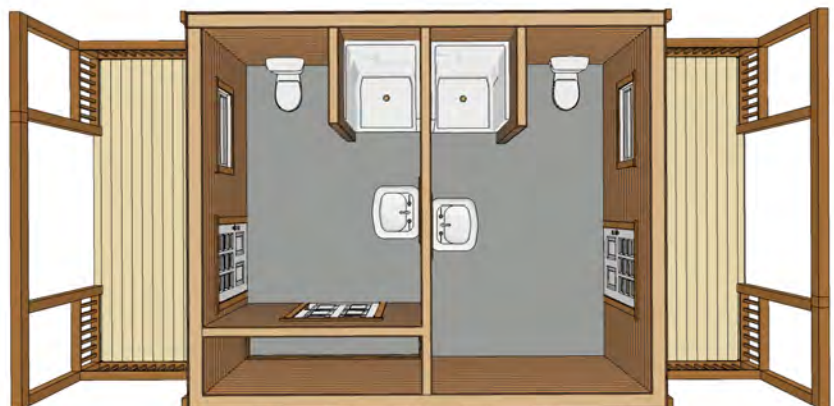
The Durango Bathhouse offers the convenience of modern facilities housed in a rugged log cabin. Owners find it to be attractive and low maintenance. This bathhouse is suitable for state parks, campgrounds, RV parks and other applications. It can easily be outfitted to be compliant with ADA (Americans with Disabilities Act).

- **Separate Entrances**
- **2 Private Bathrooms**
- **Electrical Outlets**
- **Storage Area**

DURANGO BATHHOUSE

16'7"

14'



Additional Materials Included w/ Bathhouse

- *Life Safety Code NFPA 101 Emergency Lighting*
- *Panic Hardware Entry Doors*
- *Concrete Slabs*
- *Obscure/ Privacy Glass Windows and Doors*



SPECIFICATIONS

393 SQF

KIT OVERVIEW

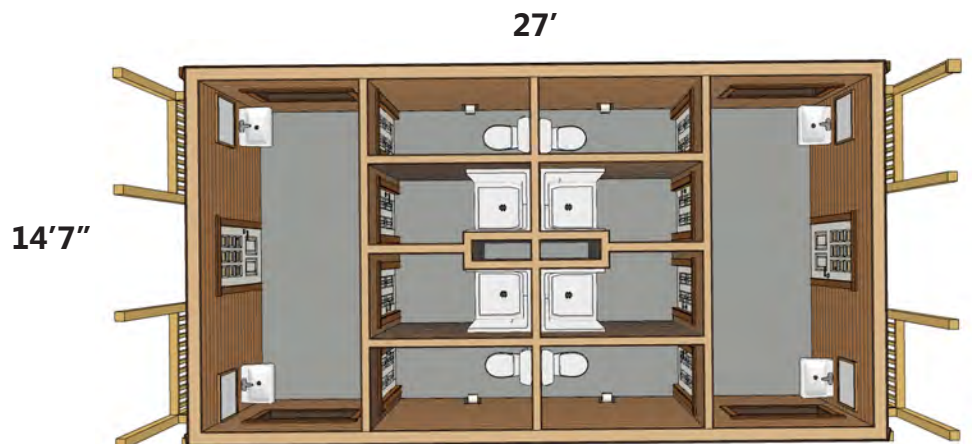
Divided into two equal rooms that are mirror images of each other. Each side will house two sinks, two private shower stalls and two toilets. Covered porches flank both ends.

- **Covered Porches**
- **4 Private Facilities**
- **Shared Dressing/Sink Area**

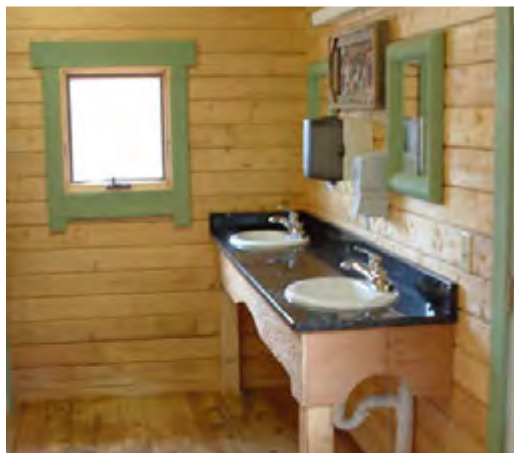
Additional Materials Included w/ Bathhouse

- *Life Safety Code NFPA 101 Emergency Lighting*
- *Panic Hardware Entry Doors*
- *Concrete Slabs*
- *Obscure/ Privacy Glass Windows and Doors*

ALPINE BATHHOUSE



BATHHOUSES



SPECIFICATIONS

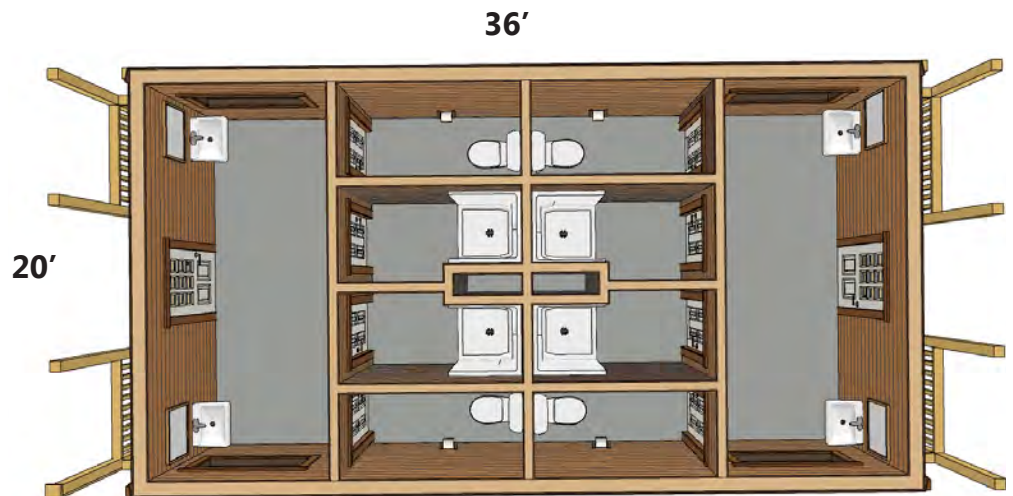
720 SQF

KIT OVERVIEW

Mountain King bathhouses feature four rooms each with its own entrance. One room is designed to be a large ADA compliant restroom. The design also provides for laundry room that guests will be happy to use.

- **Separate Entrances**
- **4 Rooms**
- **Laundry Room**
- **Storage Area**
- **ADA Compliant Bathroom**

MOUNTAIN KING BATHHOUSE



Additional Materials Included w/ Bathhouse

- *Life Safety Code NFPA 101 Emergency Lighting*
- *Panic Hardware Entry Doors*
- *Concrete Slabs*
- *Obscure/ Privacy Glass Windows and Doors*



SPECIFICATIONS

840 SQF

KIT OVERVIEW

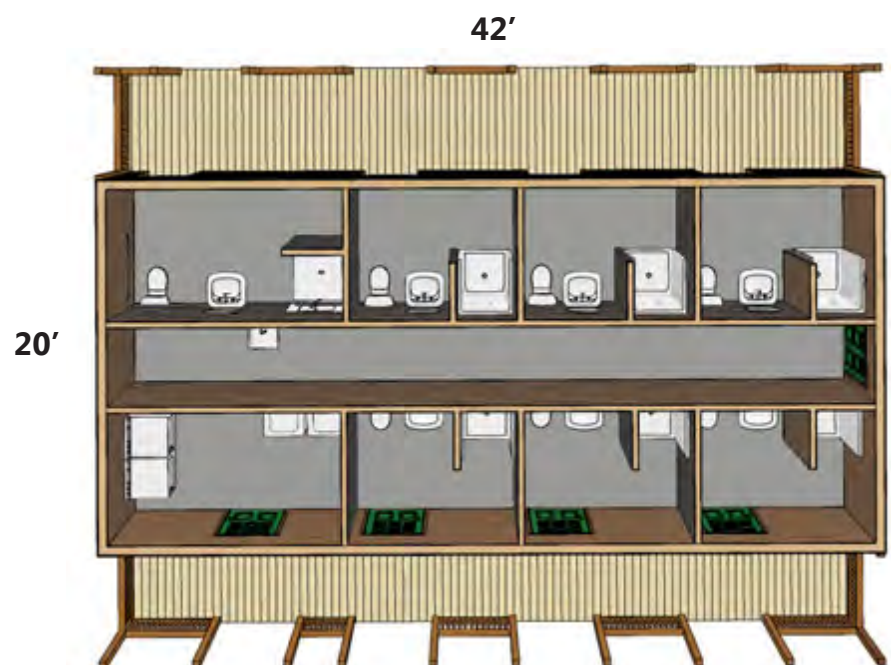
This attractive log cabin kit bathhouse features eight separate rooms. Six private bathrooms are spacious and identical with shower stall, toilet and sink. They could easily be used as family restrooms. All you have to do is add hooks and benches for your guests' comfort.

- **Covered Porches**
- **7 Private Bathrooms**
- **Laundry Area**

Additional Materials Included w/ Bathhouse

- *Life Safety Code NFPA 101 Emergency Lighting*
- *Panic Hardware Entry Doors*
- *Concrete Slabs*
- *Obscure/ Privacy Glass Windows and Doors*
- *ADA Strobes*

TWIN GROVE BATHHOUSE



Images of products are for illustrative purposes only.

BATHHOUSES



SPECIFICATIONS

1,296 SQF

KIT OVERVIEW

The perfect compliment to any campground that accomodates large groups of people. With 18 shower stalls, 6 sinks and 6 toilets no one will wait in line.

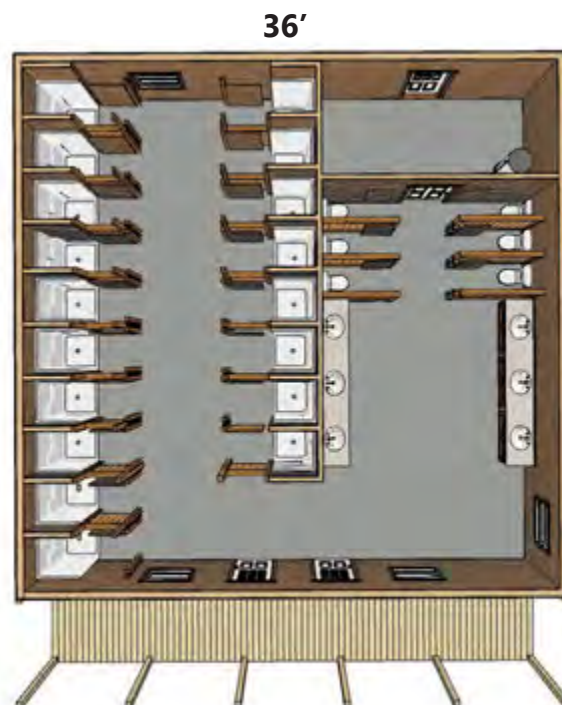
- **Multiple Entrances**
- **18 Showers**
- **6 Toilets**
- **Laundry Area**
- **Washing Area**

Additional Materials Included w/ Bathhouse

- *Life Safety Code NFPA 101 Emergency Lighting*
- *Panic Hardware Entry Doors*
- *Concrete Slabs*
- *Obscure/ Privacy Glass Windows and Doors*

GRAND BERKSHIRE BATHHOUSE

36'



BUNKHOUSES



SPECIFICATIONS

280 SQF

KIT OVERVIEW

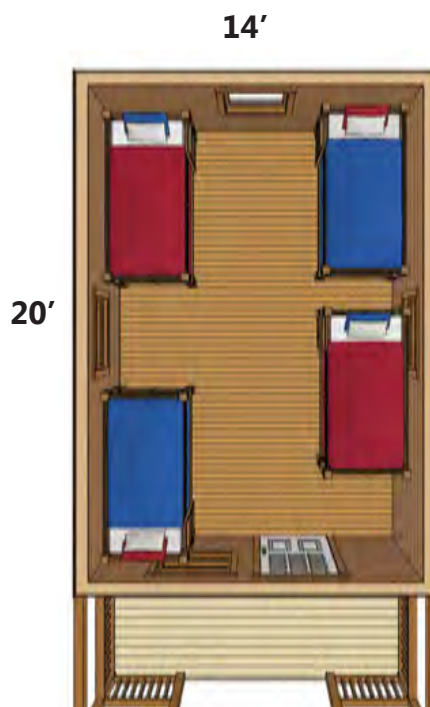
Even though the Cub Lodge is Conestoga's smallest bunkhouse, it still has all the charm. This is a traditional one room bunkhouse in which 8 campers can comfortably fit.

- **Large open room**
- **Sleeps 8 in bunkbeds**
- **Covered porch**

Additional Materials Included w/ Bunkhouse

- *Life Safety Code NFPA 101 Emergency Lighting*
- *Panic Hardware Entry Doors*

CUB LODGE BUNKHOUSE



BUNKHOUSES



SPECIFICATIONS

393 SQF

ELK LODGE BUNKHOUSE

With Bathroom

Without Bathroom

KIT OVERVIEW

Sleep 16 or 12 with your choice of the Elk Lodge Bunkhouse with a bathroom or without. This is the most versatile bunkhouse floorplan that we offer!

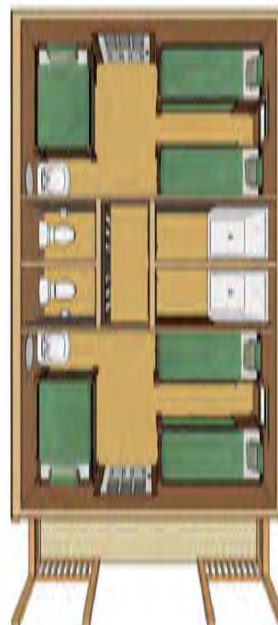
- **Sleeps 16 or 12**
- **Choice of bathroom**
- **Covered Porch**
- **Private bedroom or space for bathroom facilities**

Additional Materials Included w/ Bunkhouse

- *Life Safety Code NFPA 101 Emergency Lighting*
- *Panic Hardware Entry Doors*

14'7"

27'



14'7"

27'





SPECIFICATIONS

527 SQF

KIT OVERVIEW

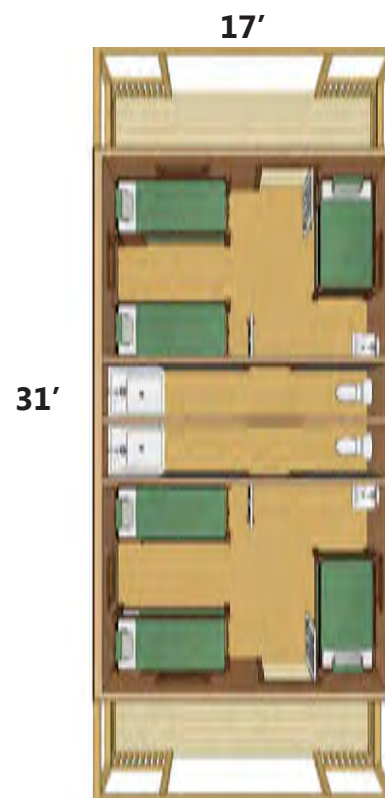
Affordable with the capacity to sleep twelve in bunkbeds. This floorplan features 2 bunk rooms with 2 bathrooms in between.

- **Two bunk rooms**
- **Capacity to sleep 12**
- **Bathroom facilities**

Additional Materials Included w/ Bunkhouse

- *Life Safety Code NFPA 101 Emergency Lighting*
- *Panic Hardware Entry Doors*

BEAR LODGE BUNKHOUSE



Images of products are for illustrative purposes only.

BUNKHOUSES



SPECIFICATIONS

840 SQF

KIT OVERVIEW

Visitors and guests will still feel like they are roughing it but with a soft, safe place to sleep and hot water to shower. The Moose Lodge has ample storage space and the covered porch provides a place to relax in the evenings after a day in the sun.

- **Sleeps 20 in bunk beds**
- **Bunk rooms have separate entrances**
- **4 showers**
- **3 sinks**
- **3 toilets**

MOOSE LODGE BUNKHOUSE

42'

20'



Additional Materials Included w/ Bunkhouse

- *Life Safety Code NFPA 101 Emergency Lighting*
- *Panic Hardware Entry Doors*



SPECIFICATIONS

980 SQF

KIT OVERVIEW

Barracks style lodging with vaulted ceilings and room to spare. Campers can spread out and enjoy their own space while still feeling like they are part of the group.

Our newest bunkhouse kit with an incredible 980 square feet.

- **Open sleeping area**
- **Capacity to sleep 26**
- **Half bathroom**
- **Covered front porch**

Additional Materials Included w/ Bunkhouse

- *Life Safety Code NFPA 101 Emergency Lighting*
- *Panic Hardware Entry Doors*

EXPLORER BUNKHOUSE

20'

49'



Images of products are for illustrative purposes only.

MULTI-PURPOSE



SPECIFICATIONS

480 SQF Shown

KIT OVERVIEW

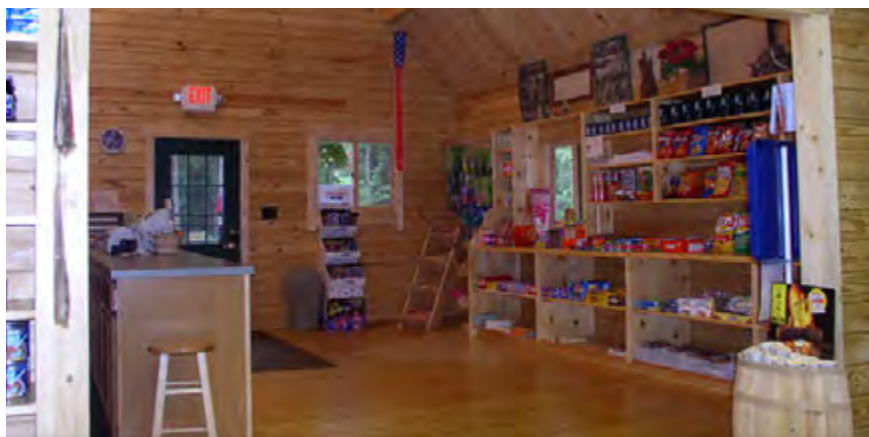
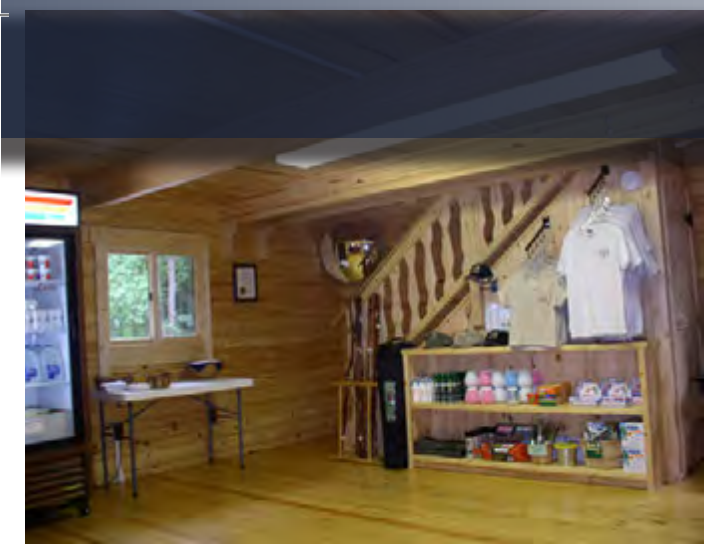
Conestoga's pavilion kits are made from high-quality lumber and are designed to offer shelter from the elements as well as provide shade. Each pavilion kit includes a 45-year warranty metal roof for added durability. We can customize the plan to any size requirement and even add walls for a greater sense of enclosure.

SYCAMORE PAVILION

Our Pavilion Kits are available in any configuration or size.

Add walls to separate sections, keep it completely open or enclose it.

The options are limitless. Whatever your application we can customize our pavilion kit to fit your Park or Campground.



SPECIFICATIONS

1240 SQF

KIT OVERVIEW

The Trap Pond Multi-Purpose Cabin Kits are incredibly versatile and useful in a wide range of commercial applications. At over 1,200 square feet this building is ready-to-use log built space.

Since the space of the Trap Pond is completely adaptable, a floorplan can be created to address your property's needs. Areas can be added for storage, restrooms, reception or just about anything else you might need.

- **1,200+ of flexible space**
- **A 6' covered front porch**
- **Additional loft space above**

TRAP POND

20'

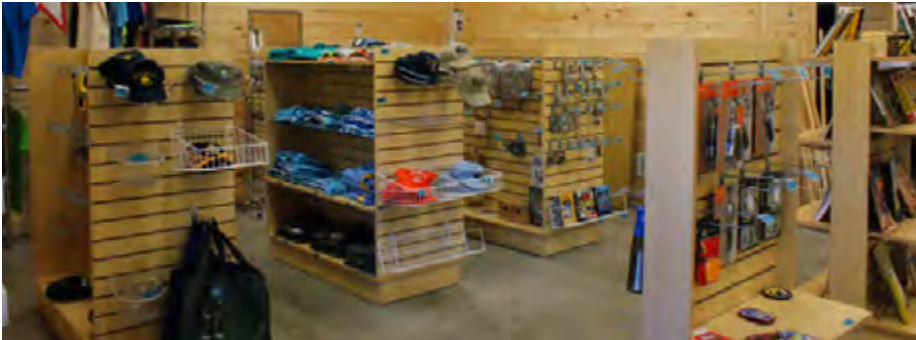
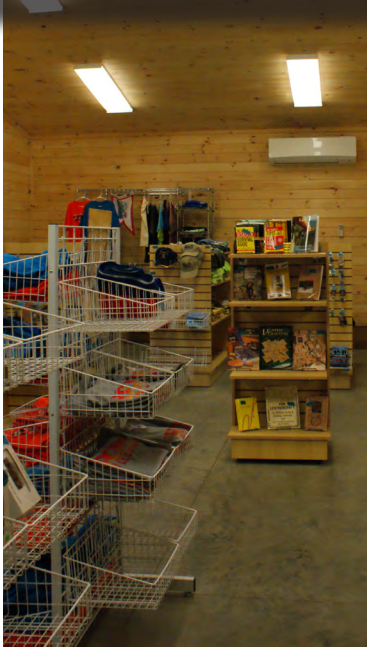
42'



*Additional Materials Included w/
Multi-Purpose Buildings*

- *Life Safety Code NFPA 101 Emergency Lighting*
- *Panic Hardware Entry Doors*

MULTI-PURPOSE



SPECIFICATIONS

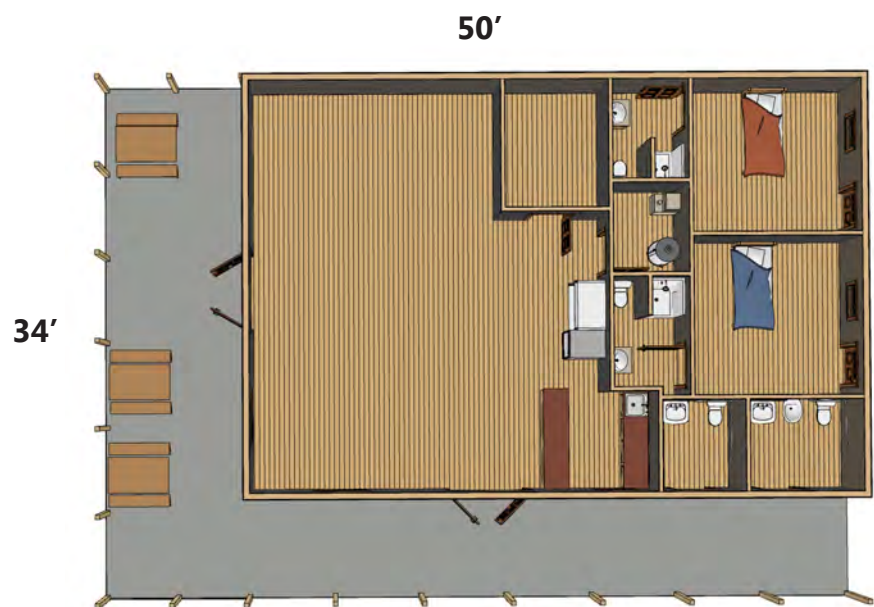
1700 SQF

LINCOLN

KIT OVERVIEW

The main room of the Lincoln is the trading post. Just off the trading post, you'll find an oversized supply closet and the mechanical room. Two ADA compliant restrooms with outside private entrances are located at the front of the building. In addition, there are two staff bedrooms also with private outside entrances.

- **2 restrooms**
- **Separate staff quarters**
- **Sales area**
- **Supply closet**
- **Concessions area**



Additional Materials Included w/Multi-Purpose Buildings

- *Life Safety Code NFPA 101 Emergency Lighting*
- *Panic Hardware Entry Doors*



SPECIFICATIONS

1840 SQF

KIT OVERVIEW

At 1840 square feet, the standard Cropper Island multi-purpose log cabin kit features four large rooms, two half bathrooms and a huge wrap around covered porch. The two restrooms are ADA compliant. The expansive covered porch is a great location for rockers, vending machines or whatever appeals to your guests.

- Check-in/Check-out area
- Laundry facility
- Arcade/Game room
- Private meeting areas
- Snack bar
- Fitness center

CROPPER ISLAND

60'

44'



Additional Materials Included w/Multi-Purpose Buildings

- Life Safety Code NFPA 101 Emergency Lighting
- Panic Hardware Entry Doors

Images of products are for illustrative purposes only.

MULTI-PURPOSE



SPECIFICATIONS

3000 SQF

KIT OVERVIEW

This attractive building is almost completely surrounded by covered and uncovered porches. The main entrance is through a set of double doors that leads into the main hall featuring vaulted ceilings. A large kitchen can be found at the rear of the building with its own entrance.

- Expansive covered porches
- Trading post
- Kitchen
- Commissary
- Private restrooms
- Storage

HURON

75'

40'



Additional Materials Included w/Multi-Purpose Buildings

- Life Safety Code NFPA 101 Emergency Lighting
- Panic Hardware Entry Doors

Product Details

Pier Kit (Optional)

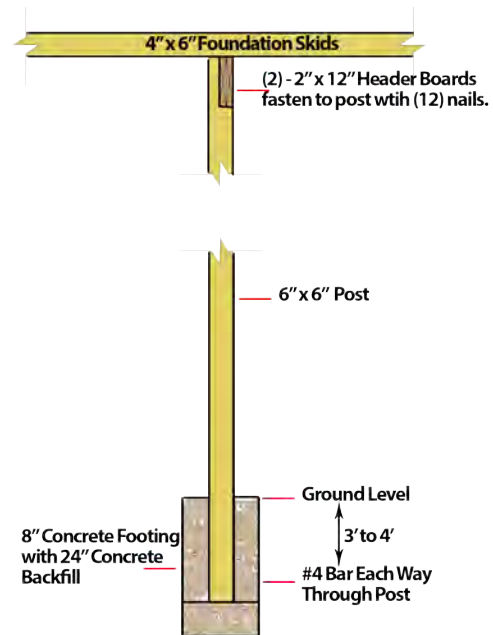
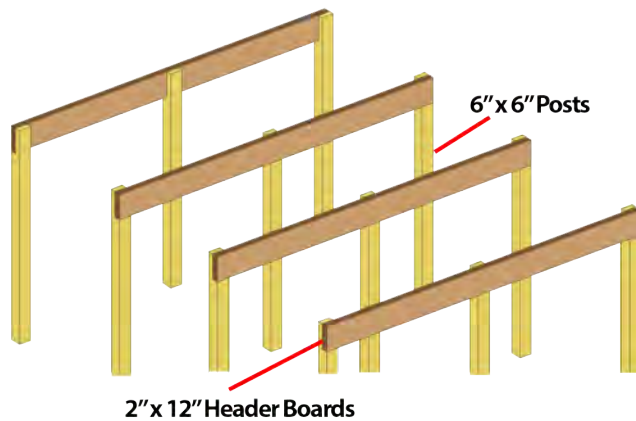
Cabins can be placed on various foundations, including slab, crawl space, basement, and pier depending on preference and land layout. When uneven land is a problem, Conestoga can offer a pier foundation kit as a solution. This foundation kit can also be used when the ground's integrity cannot hold the cabin directly or where there may be ground erosion over time. In addition to terrain issues, the pier foundation kit offers increased cabin ground clearance and access to the plumbing and electric on the underside of the cabin.

NOTE: Specifications for other types of foundations are available for an associated design fee.

Kit Includes:

- 6" x 6" Posts
- 2" x 12" Header Boards
- Nails

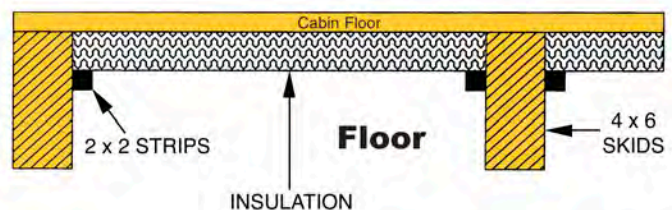
Quantity of piers varies depending on cabin size. Consult factory for details.



Insulation Kit (Optional)

The insulation kit that Conestoga offers consists of 1-1/2" thick pieces of foam board cut to fit between furring strips attached to the roof. Flooring insulation is placed on the bottom side of the floor boards and held in place by 2" x 2" strips.

Higher energy codes may have other requirements and Conestoga offers an insulation kit to meet R38 standards. Information about the wall insulation kit can be found on page 6 in this catalog.



Product Details

Windows

Conestoga uses high quality casement and double hung windows. As a standard all our windows are Low-E/Argon and utilize Warm-Edge Technology to enhance energy performance.



Flooring

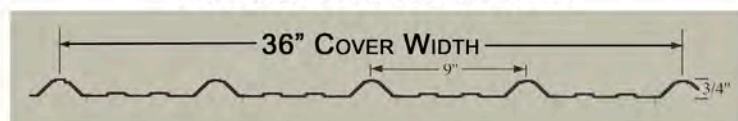
Conestoga uses only high-quality, number-one Southern Yellow Pine flooring.

Upgrades available to any type of finished flooring.



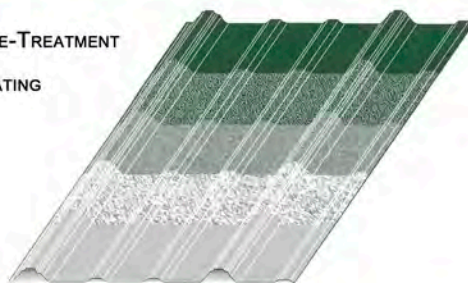
Metal Roof (Shingles Optional)

29 GAUGE FULL HARD STEEL



ZINC PHOSPHATE PRE-TREATMENT

ZINC COATING



- Seamless Roofing System
- Sustainable and longer lasting than a traditional roof, with a life expectancy of 45 years
- Will never decompose and when it is time to be replaced, steel is recyclable and reusable
- Shingles roof optional

45-Year Paint Warranty

Engineering Services

Conestoga Log Cabins & Homes offers log cabin kits that are fully engineered, pre-cut and ready-to-assemble. Our log cabin kits range from cozy 12 x 12 two-room bungalows to spacious 2,000+ SQF grand log cabins with multiple bedrooms, baths and versatile loft arrangements.

Our standard line of log cabin kits are designed to appeal to a wide range of needs. Moreover, we offer custom design services and will engineer and produce a log cabin kit to meet your specific needs.

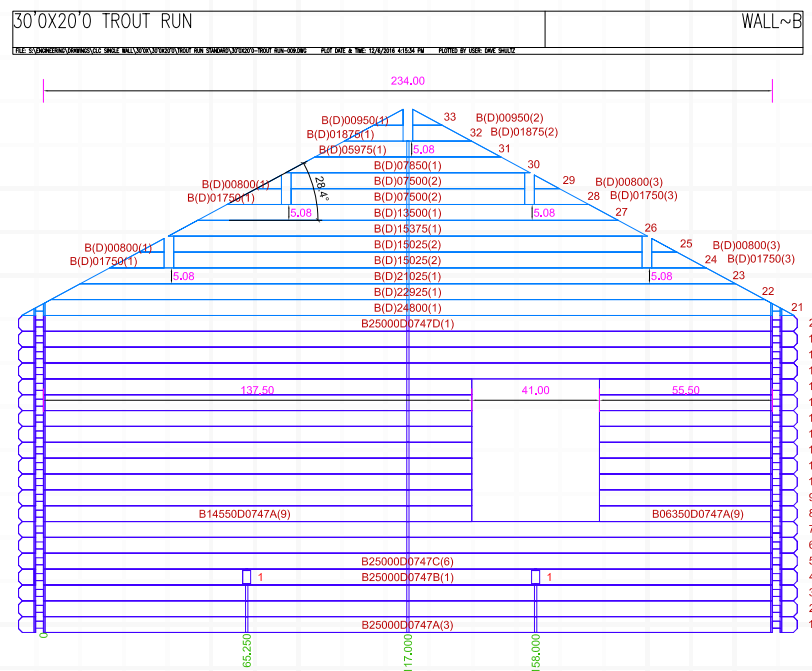
Want to see what your custom designed building will look like? We can do one better, you can walk through it with our new "fly through" 3D videos. We can even furnish it just how you would like to see it! Or look at it from an aerial view and see just how much space your new log building has to offer.

Assembly

We make it easy for home owners or builders without log home construction experience to build our log cabins. Every log has a label attached with a unique number that corresponds to plan drawings. This unique number enables you to know the exact location of every log during the construction process.

The numbering system not only ensures organization and easy identification, but facilitates technical support if needed. If a question arises during construction our technical support team is available to provide assistance. By providing the log number our technicians will know exactly what you're working on and how to better assist you.

In addition to our user friendly log numbering system, detailed assembly instructions, plans and diagrams accompany every Conestoga log home kit. Telephone technical support is included with every purchase. We also offer an extensive library of assembly videos. In addition, an assembly crew can be made available to travel worldwide.



Need help with your log home assembly kit?

In case a question arises, Conestoga's knowledgeable staff is available for assistance. Conestoga is committed to providing customers with quality support, materials and supplies.

Service

Whether you're an individual or an organization, Conestoga has experienced construction teams available to assemble our structures within the United States and abroad.

With a Conestoga team you can be assured you have the skill and expertise of trained craftsmen. Conestoga's teams provide a knowledge level that ensures an efficient and quality installation at a competitive price.

For most individuals and organizations, time seems to be in demand. Gaining more of this resource is a logical reason for hiring a Conestoga team. Experience peace of mind in knowing your newest investment has been installed with the highest level of workmanship provided by a Conestoga construction team.



- Competitive Pricing
- Efficient
- Trained Personnel Ensure Quality
- Satisfaction Guaranteed

F.A.Q.

What is the average cost per square foot for both cabins and homes?

For cabins under 800 SQF, the kit price would be around \$60/SQF. A larger home would be around \$80/SQF. A rough estimate for a turnkey cabin would be double the kit price. This includes excavation, foundation, utilities, and more so that the log structure is ready for occupants. The price would be more for longer driveways, cabins built on a hill, upgrades, etc. More information can be found at: ConestogaLogCabins.com/log-cabins-kit-turn-key-cost/.

Do your logs come from renewable forest practices?

Yes, all our logs come from Forest Stewardship Council (FSC) certified vendors. The engineered logs originate from trees from planted forests and have a much smaller carbon footprint than other log systems.

What is an average time for delivery from the time of a purchase order?

While this can vary based on size of the cabin, time of year ordered, and customization, the time from sign-off of building plans to shipping is about 60 days. The time from order placed to sign-off of building plans can be days for a standard cabin to months for larger complex homes that require numerous customer requested revisions.

How long does it take to assemble?

The size of the building and the number of people assembling has a significant impact. Cabins under 800 SQF with a crew of three people should take about three weeks to assemble a basic cabin. Additional time should be added for foundation, running utilities, obtaining construction permits and staining. With larger log homes, with full insulation and finishing, the time would be a few months. We have a crew that can assemble the kit worldwide and would work with your local general contractor. We also have in-house technical support for those that self-build. Here is a link to assembly videos: <http://conestogalogcabins.com/category/assembly-videos/>.

How often is it recommended to re-caulk between the logs?

Because of our engineered logs, there is no need to caulk between the logs. Caulk is used where the logs cross, such as the corners of the cabin. It is recommended to re-stain every five years, which is when the caulk should be inspected and re-caulked as needed.

What are the different grades of insulation used?

We use both fiberglass and Polyiso board. The fiberglass can be R-19 to R-38 and is typically used in floors and ceilings. If wall insulation is needed, one or two layers of Polyiso board is installed. Our typical four season log home has one layer of wall insulation equal to R-16. We have log homes in Alaska and many other cold climates and can always meet the local energy code requirements.

Is there a choice of roofs and if so, what are the different types?

We use both shingles and metal in all colors. Our metal roof has a 45 year warranty and shingles have 25-35 year warranty.

What type of foundation is recommended?

Our log buildings have been built on many different types of foundations. Typical foundations are slabs, crawl spaces, piers or full basements.

What is the warranty on the material used?

The entire cabin has a one year warranty. Specific materials have longer warranties, such as the roof for 25-45 years and windows for 20 years. The logs are warranted against splitting for life.

Is there a warranty on the assembly and construction?

A typical construction warranty of one year on the entire cabin is provided. Technical support is also provided free of charge.

Is there a strong sound barrier from the exterior?

Wood naturally absorbs sound, which is why it is used along highways for sound barrier walls. All log cabins provide significantly better sound protection than traditional building systems. Because of less movement and the tight seal of our Everlast™ logs, our cabins are an excellent sound barrier.

Does extreme humidity or cold affect the logs and the caulking?

We have cabins in tropical climates and the cold region of Alaska as well as in all 50 states and 7 countries. Wood grows naturally in all climates. The specific species of wood we use has proven to withstand all climates. We can also meet any snow load or wind load building requirements. One of our customers told us, "The town and neighboring communities where our cabin is located was declared a national disaster area from Hurricane Irene. Our cabin suffered NO damage and is a solid Conestoga log cabin."



info@ConestogaLogCabins.com

ConestogaLogCabins.com



246 N. Lincoln Ave. | Lebanon, PA 17046
P (717) 306-4490

© Peak Industries Inc, 2020
Rev 012/2020